



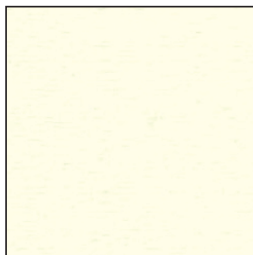
COLOR SELECTION CHART



White



Off White



Bone White



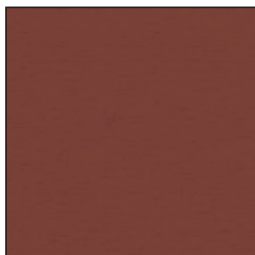
Eggshell



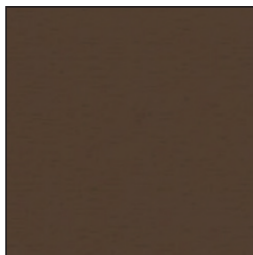
Khaki



Tangerine



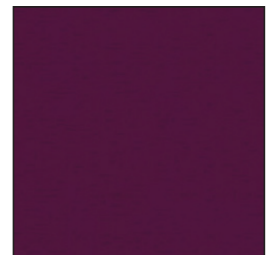
Terra Cotta



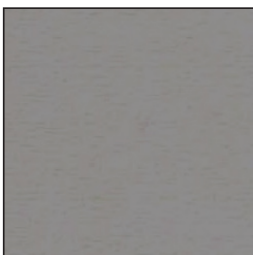
Brown



Red



Burgundy



Pearl Gray



Royal Blue



Blueberry



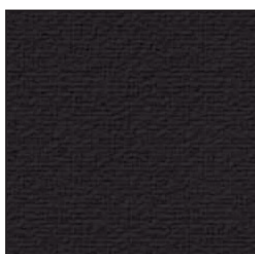
Teal Blue



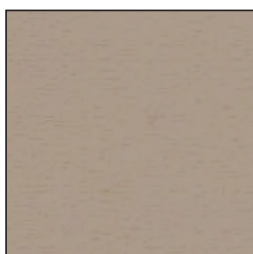
Emerald Green



Forest Green



Black



Tan

Colors are a close approximation of actual materials and are not exact matches.

We believe this information is the best currently available on the subject. It is subject to revision as additional knowledge and experience are gained. MBI makes no guarantee of results and assumes no obligation or liability whatsoever in connection with the use of this information. © 2016 MBI Products Company, Inc.

FOR MORE INFORMATION ON THESE PRODUCTS GO TO WWW.MBIPRODUCTS.COM

MBI Weather Resistant Color Chart

Cypress Exterior Fabric Flame Retardancy

Cypress Exterior Weather Resistant Fabric meets California State Fire Marshall requirements for flame retardancy: Title 19, CPAI-84 (Section 6), and FMVSS-302.

Class B – For Outdoor Use Only

Cypress Exterior Fabric Technical Support

Reproduction of actual color is limited by the printing process. A sample request of selected color is recommended. Dye lots may vary. Additional colors may be available, subject to minimum quantities. All products are custom manufactured and are not subject to return.

Cypress Exterior Fabric Cleaning Instructions

For initial cleaning, use a concentrated, granular cleaner specifically for woven fabrics such as Cypress. A concentrated vinyl cleanser and deoxidizer which removes streaking, chalking and oxidation from vinyls can be used for general maintenance. A vinyl protector that helps restore vitality to vinyls that have been damaged may also be used. A harsh, abrasive or strong solution should never be used to clean your panels.

Keep your Cypress Exterior panels clean to prevent mildew which can damage or stain the fabric. When washing down your panels, brush lightly with a soft brush. If you use a mild soap, rinse thoroughly and immediately. Occasionally hose down your panels with clean water (we recommend doing this on a hot, sunny day). Keep shrubbery, twigs and vines away from your Cypress panels to prevent damages and staining of the fabric.

Do not get insect spray on your exterior panels as they may impair the water repellency of the fabric. Do not allow water to stand on your panels as this could cause the panels to stretch. Small rips or tears should not be ignored, the panel should be replaced. When storing your panels, make sure the material is not damp or wet.

GENERAL NOTES

- Suspension hardware should not be pre-installed.
- Store products out of direct UV sunlight.
- Store and protect products from the elements and from damage.
- Grommet locations will vary from size to size
- Due to the nature of this product, some wrinkling and puckering is common and unavoidable
- Constructed from a soft and flexible fiberglass core
- Field cutting is not recommended
- Suspension hardware is not to be pre-installed.
- Do not subject acoustical products to critical edge lighting without first consulting manufacturer.
- Before installing Weather Resist panels, please request copies of installation drawings and details.

SOUND | experience

PIONEERS IN THE DESIGN AND MANUFACTURING OF ACOUSTICAL PRODUCTS FOR OVER 50 YEARS



Since 1965

INNOVATION FOR THE SOUND EXPERIENCE

WWW.MBIPRODUCTS.COM

801 Bond Street
Elyria, Ohio 44035-3318
t: 440.322.6500
fx: 440.322.1900